



Regional collaboration on “CPPS” within E.E.R.





Challenge



Politics & People



Solutions

# Energy



# Industry

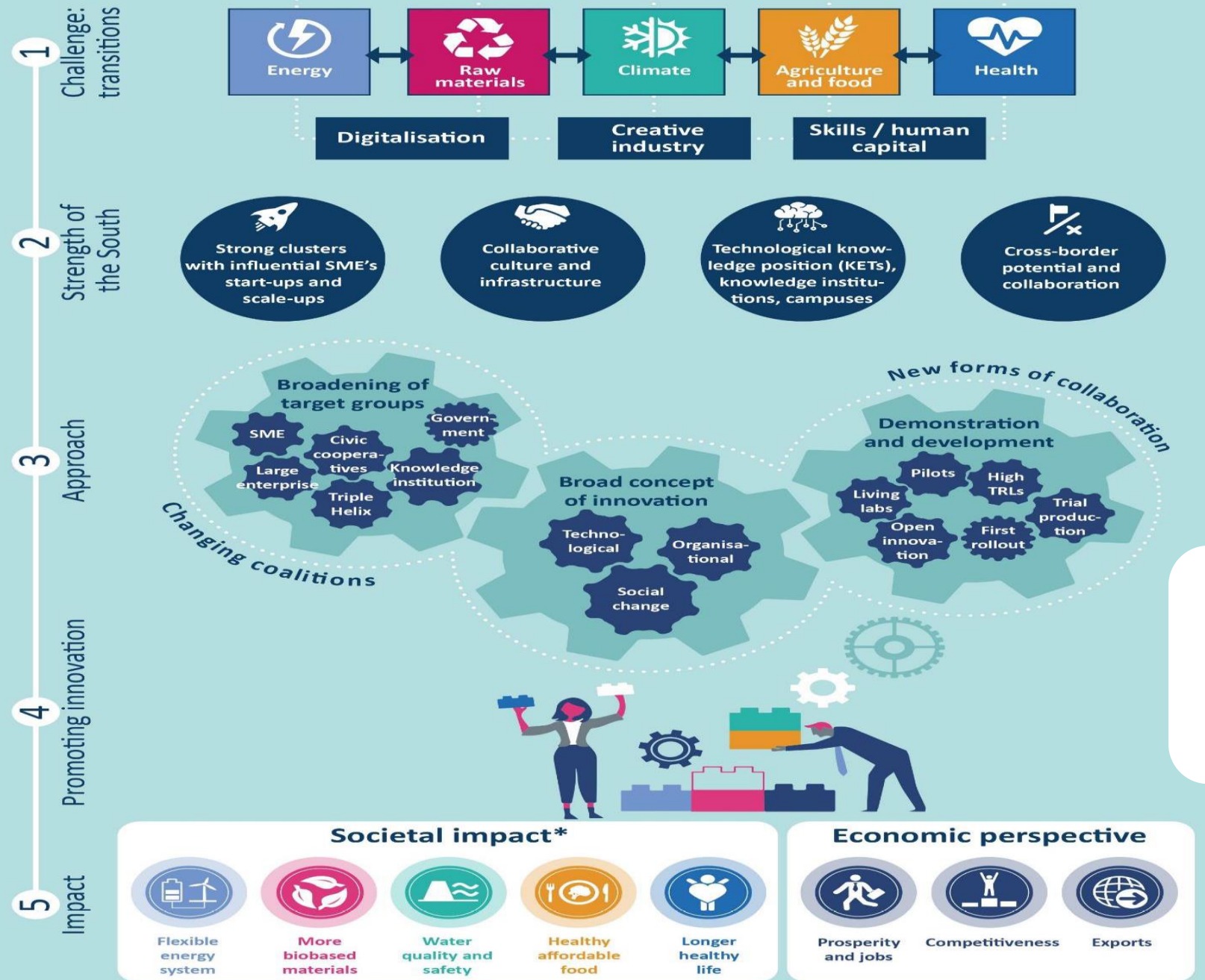


# Health

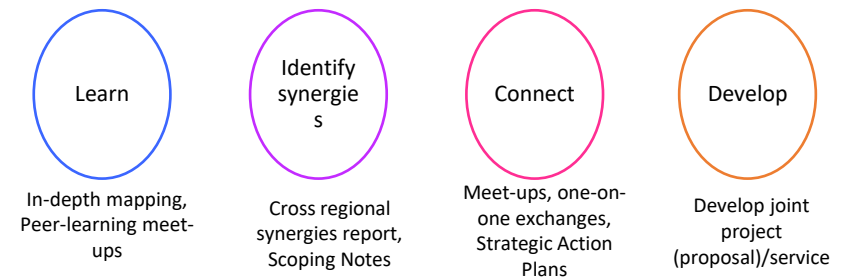




# Infographic summary of RIS3 South Netherlands strategy 2021-2027

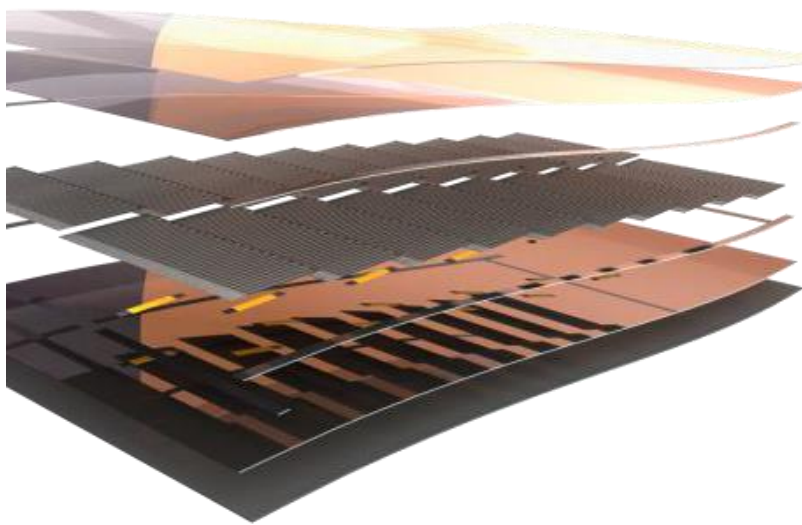


- **Collaboration** in the EERs
- **Peer learning** on innovative practices in regional strategy development and sme-support (like EDIH's)
- Concrete **joint actions plans**
- **Building bridges**

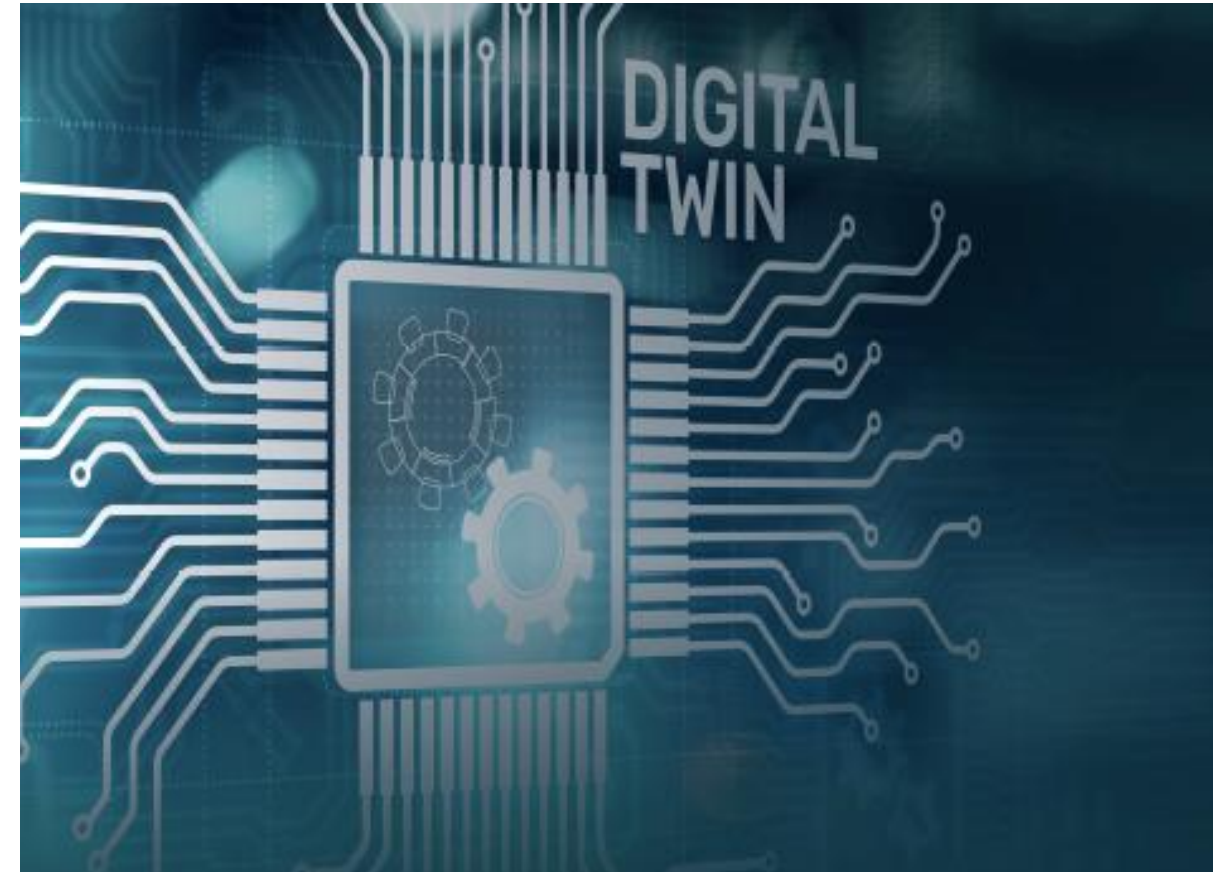


\*the examples given are indicative and not exhaustive









DIGITAL TWIN

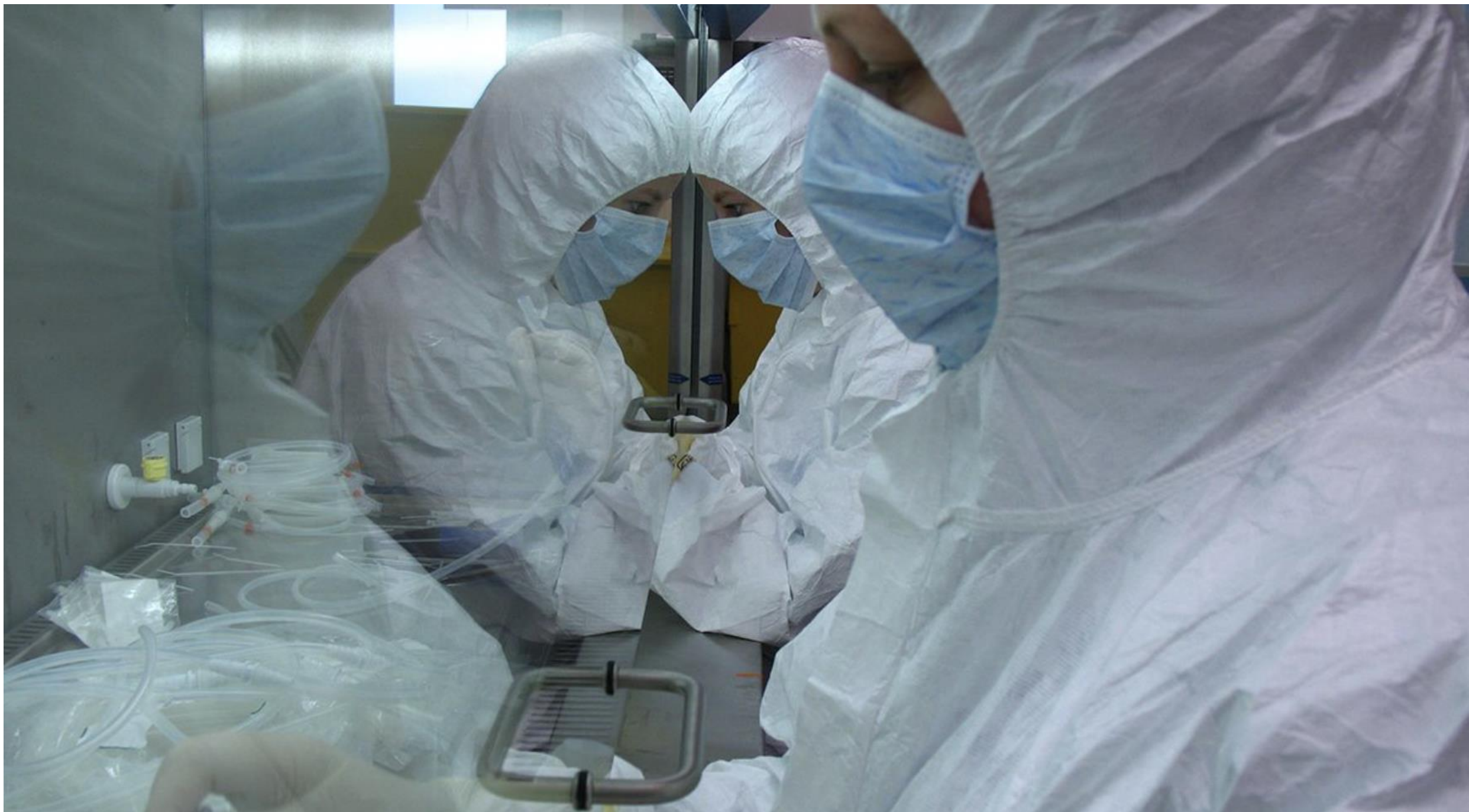
Aufbau niederländisch-deutsches

**KMU-Fieldlab Artificial Intelligence  
for Digital Twins (AI4DT)**

zwischen dem Digital Hub Werk150 in Reutlingen, Baden-Württemberg  
und dem Smart Industry Hub Süd in Eindhoven, Nordbrabant

The graphic features a dark blue background with white circuitry lines. In the center is a square frame containing two interlocking gears. The text 'DIGITAL TWIN' is at the top right. Below it, the text 'Aufbau niederländisch-deutsches' is in white. The main title 'KMU-Fieldlab Artificial Intelligence for Digital Twins (AI4DT)' is in orange and underlined. At the bottom, the location information is in white.





FUNDS	TRANSITIONS					ENABLERS		
	Energy	Raw materials	Climate	Agriculture & food	Health	Key enabling technologies	Digitalisation	Labour Market / Skills / Social Innovation
EFRO	✓	✓	✓	✓	✓	✓	✓	✓
ESF+					✓			✓
POP	✓	✓	✓	✓	✓			✓
EFMZV	✓	✓	✓	✓	✓			✓
Interreg	✓	✓	✓	✓	✓	✓	✓	✓
LIFE+	✓	✓	✓	✓				✓
Horizon	✓	✓	✓	✓	✓	✓	✓	✓
Digital EU	✓	✓	✓	✓	✓	✓	✓	✓
CEF2	✓						✓	
Innovation Fund	✓							
InvestEU	✓	✓	✓	✓	✓	✓	✓	✓



Single Market (including SME services through Europe Enterprise Network – SME financing through InvestEU, also consumer protection and statistics) and Erasmus+ (higher education cooperation) are not included. Neither do we refer here to the new mechanism to tackle border barriers (relevant to the labour market in view of border location) nor to the programme to support structural reforms (relating to national policies, where applicable).





META-STORYLINES PER CORE VALUE

In Brabant we are proudly **unconventional**, continuously challenging the status quo, pushing the boundaries of the expected thereby raising the bar for what is possible.

In Brabant, our way to compete is to **collaborate**. We are easy-going, approachable and have a profound willingness to share our ideas with each other, with our neighbours, and with the rest of the world.

Brabant is an **immersive** experience. It is a sensuous plunge that embraces you and welcomes you. In Brabant, you become part of a community, part of a greater story, until you too will passionately say: "I am a Brabander".

THE PEOPLE, COMPANIES, ORGANISATIONS, ATTRACTIONS AND EVENTS OF BRABANT ARE:

**COURAGEOUSLY  
UNCONVENTIONAL**

**PURPOSEFULLY  
COLLABORATIVE**

**REMARKABLY  
IMMERSIVE**

**BRABANT**

SUPPORTING VALUES PER CORE VALUE

Tinkering - Creative - Inventive - Innovative  
Self-assured - Knowledgeable - Ambitious - Curious  
Pioneering - Challenging - Entrepreneurial - **Open-minded**

Informal - Approachable - Un-hierarchical - Energetic - Driven  
Adding sustainable value - Internationally orientated - A living lab  
Co-creators - Sharing - Mentoring - Enabling - **Open-handed**

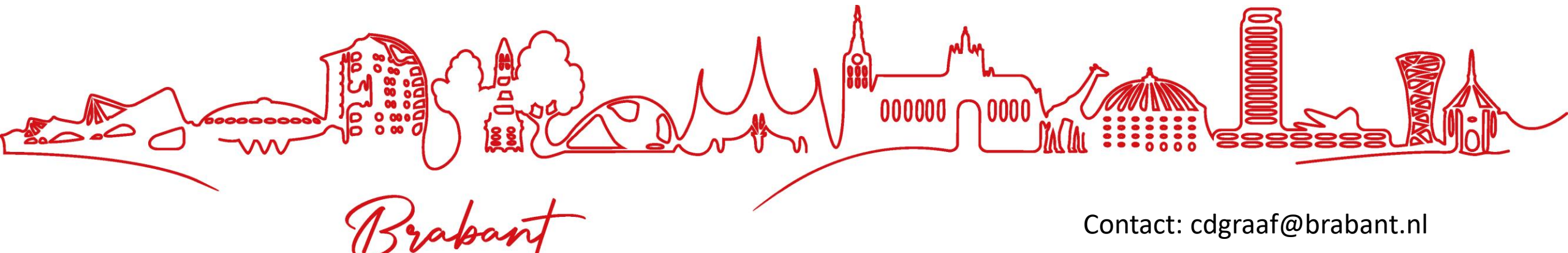
Warm - People-centric - Passionate - Bourgondian - Quality of Life  
Profound attention to detail - Extra-ordinary - Magical - Celebrational  
Joyful - Senseful - Colourful - Welcoming - Friendly - 'Gezellig' - **Open-hearted**





Life is all about building  
and crossing bridges

# Join us!



Contact: [cdgraaf@brabant.nl](mailto:cdgraaf@brabant.nl)